

# The Eden

TOTAL SIZE  
154.23m<sup>2</sup>

MIN LOT WIDTH  
10.5m



3 BEDS



2 BATHS



1 CAR



The Eden offers a clever, efficient design for the smaller, or growing family. Boasting three bedrooms, each with built in robes, a generous open-plan kitchen and living space and convenient garage access via the laundry, this cleverly considered home packs a punch.

Modern Facade —  
Artist Impression



Classic Facade Option —



Contemporary Facade Option —

**MILLER**ATKINS

MILLERATKINS.COM.AU



# The Eden



## Area Schedule — m<sup>2</sup> sq

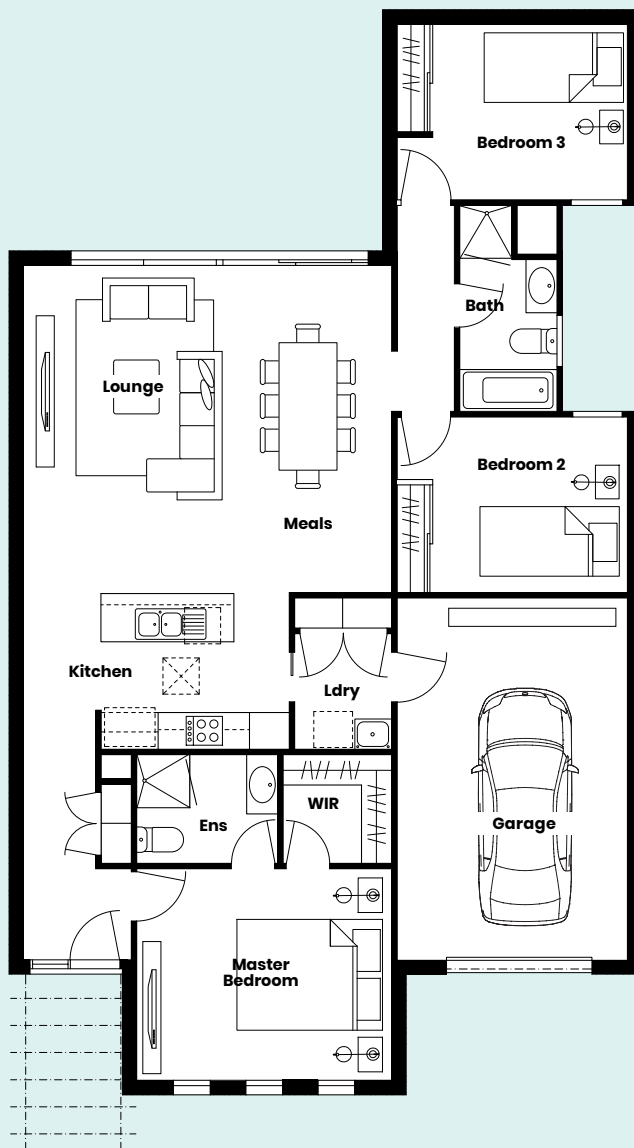
Ground Floor	122.83	13.22
Garage	25.30	2.72
Front Porch	6.10	0.66
<b>Total</b>	<b>154.23</b>	<b>16.60</b>

## Key Area Dimensions —

Kitchen	3120 x 2600mm
Lounge/Meals	6110 x 5430mm
Master Bedroom	4230 x 3510mm
Bedroom 2	3230 x 2915mm
Bedroom 3	3230 x 2915mm
Garage	3820 x 6010mm
Home Width	10,500mm
Home Length	18,650mm

## Lot Requirements —

Minimum Lot Width	10.5m
Minimum Lot Length	21m



## When can we move in?

Call Campbell Fehring — 0400 446 099

[c.fehring@milleratkins.com.au](mailto:c.fehring@milleratkins.com.au)